



Aficio™ MP C3001/3501

Leading
colour



RICOH Believe in a better way

*At Ricoh we go further and
our motto speaks for itself;
"Believe in a better way".*



Seamless integration

Today, multifunctional devices have remarkable capabilities. Whether you're faxing, scanning, copying or printing, the output is high quality and colour. They produce hardcopies at faster speeds and turn scans into dynamic files.

But at Ricoh we go further and our motto speaks for itself; "Believe in a better way".

Our products can be seamlessly integrated into your business and are developed to be intuitive to your specific needs. With our Business Solutions Group, we are always finding better ways for you to do business with the help of your Ricoh device.

Not only will Ricoh's range of multifunctional devices and software solutions improve your organisation's efficiency and productivity, it will also reduce your impact on the environment.

Our solutions product range means you can:

Manage your printing

- Secure your information
- Cut costs and increase efficiency
- Centralise frequently used documents
- Improve your Customer Relationship Management (CRM) with personalised printing

Manage your documents

- Share information quickly and easily through your business
- Save time by scanning directly into applications used by your organisation
- Easily consolidate paper and electronic documents and processes

Manage your devices

- Meter reads and billing
- Usage reporting
- Matching device location to workload
- Efficiency optimisation and cost reduction

Redefining productivity



The Aficio™MP C3001/C3501 is a reliable, multifunctional device designed to enhance workflow in office environments.

Increase the speed and efficiency of your operations with a fast first copy, high-speed colour output, print from USB/SD and scan to email, folder or USB/SD. Business efficiency is further increased and user-friendliness improved with Ricoh's new App2Me software platform: a range of downloadable Widgets that enables personalisation for mobile users. Outstanding environmental specifications include lowest-in-class power consumption.

- High print/copy speed – 30/35 colour pages per minute.
- Optimise print cost management – use quota setting.
- Print from USB/SD (optional) – no PC needed.
- Highly versatile – print on thick paper up to 300 gsm via bypass tray.
- Stay secure with standard HDD overwrite and encryption features.

Enhance workflow

A high print/copy speed of 30/35 pages per minute and a warm-up time of only 23 seconds get your office running efficiently. Recovery from sleep mode is equally impressive: a mere 13 seconds. Paper handling capacity is a massive 4400 sheets.

Improve print cost management

Save money and reduce your environmental impact with quota setting. Set and manage the number of outputs of each individual or group. Get an overview of the usage of everyone in your office and reduce the total cost of ownership.

Convenient and quick

Print PDF/TIFF/Jpeg files easily and directly from a USB memory stick or SD card; simply insert the USB memory stick or SD card into the optional USB/SD slot. Printing in this way – without requiring a PC – is a great time-saver.

All-round versatility

You can print heavyweight papers up to 300 gsm via the bypass tray. The Aficio™MP C3001/C3501 is therefore ideal for quick turnaround of items printed on thick stock, such as short run direct mail or Point of Sale material.

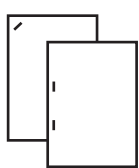


Professional print quality, scanning, faxing and finishing abilities

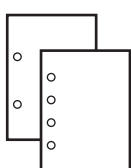


Impressive colour

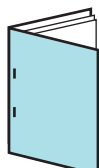
Boost your organisation's image with high impact colour documents. With up to 1200 dpi print resolution the MP C3001/C3501 ensures expert results, detail and images.



Stapling



Hole punching

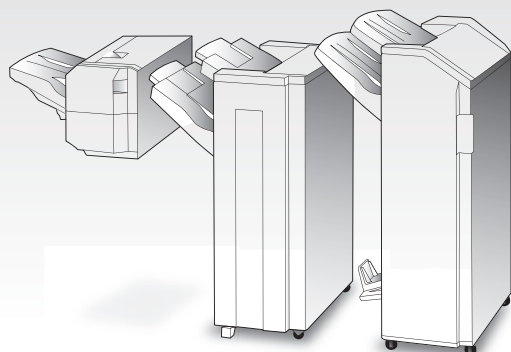


Saddle stitch

Finishing experts

The Aficio™MP C3001/C3501 offers a full range of finishing possibilities. Create first rate sales, training and presentation material easily with

- 250-sheet internal shift sort tray
- 500 and 1000 sheet finisher
- Punch enabled booklet finisher



500-sheet finisher with 50-sheet stapling in 5 positions

1000-sheet finisher with 50-sheet stapling in 3 positions

1000-sheet booklet finisher with 50-sheet stapling in 5 positions and booklet stapling up to 10 sheets

Continuous operation

A maximum paper capacity of 4400 sheets ensures minimum replenishment time, thanks to large standard tray capacity and a range of optional large capacity trays.

Improved handle design

Easier access to paper trays with an intuitive overhand/underhand grip handle.



Your communication hub

Store selected print, copy, fax and scan data on the hard disk. Use Web Image Monitor to retrieve stored data, view files plus reorganise, change or delete them using a web browser. Better internal communications, while you print less, reduce and reuse.



Complex tasks made easy

The MP C3001/C3501 helps you create first class documents with the greatest of ease. The advanced colour LCD touch panel offers:

- Customisable icons that show the most popular functions
- Preview of stored documents as coloured thumbnails
- Easy navigation with sharp display of text and images
- Animated user guides to help you with any problems

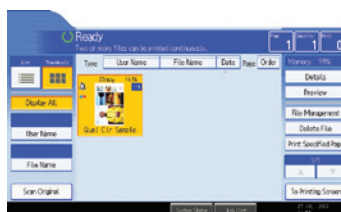
Automatic Reverse Document Feeder
50-sheet

Bypass Tray
100-sheet*

Simple single access to
fuser, image processing and
other internal components



Optional extra 1200-sheet
LCT paper tray

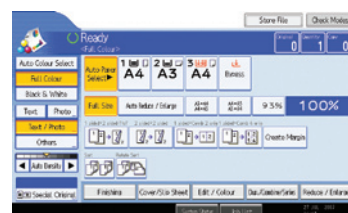


Outstanding Usability

With full colour QWERTY graphic operating panel, you can preview your stored documents as a colour thumbnail. Quick sharing of information is now achievable.



Simplified view

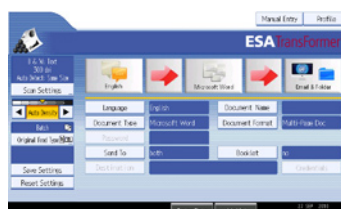


Detailed view

Beyond scanning

Move beyond simple scanning with optional software that can

- Provide OCR (Optical Character Recognition) capabilities with **ESA Transformer** – you can scan a hardcopy document into an editable format such as Microsoft Word, Excel, PowerPoint, PDF and more
- Automate your document scanning and routing. **GlobalScan NX** makes it easier to incorporate paper documents (such as invoices, purchase orders and bills) into your digital workflows



ESA Transformer

Graphical Icons for ease of use



GlobalScan NX

Project based scanning meets the needs of different business documents

Easy on the environment

At Ricoh we help you lower the environmental impact in your office as well as lowering your cost.

The MP C3001/C3501 have eco-friendly and money-saving features such as duplexing, ultra low sleep mode, increased toner yield and low TEC (Typical Electricity Consumption). The devices can also be set to Eco Mode, a setting which can help you reduce energy use significantly. For a fast warm-up time the devices incorporate Ricoh's IH roller fusing system. In addition, Ricoh products are Energy Star compliant and commit to the environment with the use of toxic free materials* and minimum emissions.

Ricoh's green commitment

At Ricoh we are using our expertise in innovation to deliver products that exceed in both performance and environmental sustainability. From green product design, manufacture of energy efficient office solutions, right down to the collection and recycling of our products; everything we do helps reduce usages of energy and resources, even as we push the limits of technology and productivity.

Machine Recycling Program

We have a free program designed for our customers to recycle their Ricoh machines once they have reached the end of their life. Since its launch in 2002, we have successfully recycled over 180 tonnes of Ricoh machines into reusable materials.

Consumables Recycling Program

Ricoh's Consumables Recycling Program – the first in Australia, established in 2001 - will ensure your toner cartridges are fully recycled with zero waste to landfill.

Environmentally friendly solutions

Ricoh solutions can help your organisation minimise its impact on the environment and promote sustainability. Here are just some ways it can be done:

- Document management software allows users to store, retrieve, deliver, revise and manage documents without ever printing a hardcopy.
- Rules-based printing can automatically redirect print jobs to the most suitable device to minimise energy consumption, ensure the use of resource saving features, and control access to colour output.
- Managing your devices and obtaining centralised reports helps to establish printing benchmarks, analyse inefficiencies, justify fleet consolidation and device reduction and help change user behaviour.
- Authenticating users at the MFD before print jobs are released reduces output waste.

*The 'Restrictions on Hazardous Substances (RoHS)' directive limits the use of substances such as lead, cadmium and hexavalent chromium in electronic goods.



Bringing solutions to you

The combination of Ricoh's software, hardware, service and support network is a powerful and complete solution to help your business print and manage documents for less cost, less CO₂, less waste and less complexity. We provide complete solutions and the expertise to address every aspect of the document lifecycle.

The Business Solutions Group

When you buy a Ricoh device you gain access to our Business Solutions Group (BSG) – a dedicated software support centre. Come to us with your challenge and we will identify the solution, source it internally, or develop one specifically to suit your business and integrate into your existing systems.

The Business Solutions Group works closely with customers and applications developers to extend the efficiencies of Ricoh's software-enabled copiers and printers in order to meet specific business needs.

Manage your printing



You can reduce, secure and centralise your printing easily with Ricoh's customisable solutions.

Secure your information

If security is a concern we have a number of optional software solutions that can turn your Ricoh devices into an electronic mailbox. Documents are stored until they are released with a user ID and password or swipe card, eliminating security and also reducing paper waste.

Cut costs and increase efficiency

Ricoh offers optional software to help modify and enhance existing processes to control costs through:

- setting print quotas for users
- reducing expensive colour printing
- eliminating pre-printed stationery
- optimising in-house mailings by generating your own barcodes

Manage your documents



Ricoh offers optional software solutions that assist in managing your documents – so you can capture, store, retrieve, deliver, revise and manage them without ever printing a hardcopy.

Ensure your information is up to date, always available and stored in a secure location. Searching for a document when you do not know the name of it, when it was created or where it was filed can now be done in seconds!

We can offer a solution that can be personalised, offer security and automate tasks such as capture, archiving and distribution, depending on your specific needs.

Manage your devices



Meaningful reports are crucial to every business – that's why we offer solutions to assist you to manage your devices so you can easily manage and monitor your fleet.

With device management reporting you can better understand and then reduce your costs and optimise the efficiency of your Ricoh devices.

We offer device management software that offers the following:

- Automatic, accurate and timely meter reads and billing
- Usage reporting for the device fleet accessible remotely from a secure website
- Increased up-time and the ability to match the device location to workload
- Ability to optimise for efficiency and cost reduction

Specifications

Copier

Copying process:	One dimensional solid scanning through CCD dry electrostatic transfer printing
Copy speed B/W / full colour:	
Aficio™MP C3001:	30 copies per minute*
Aficio™MP C3501:	35 copies per minute*
Resolution:	Copy 600 x 600dpi, 4 bit
Multiple copy:	Up to 999
Auto Reverse Document Feeder	50-sheet
Warm up time:	Less than 23 seconds
First output speed:	
Black and white:	4.9 seconds
Full colour:	7.8 seconds
Zoom:	25 – 400% (in 1% steps)
Memory:	
Standard:	1.5 GB + 160 GB Hard Disk Drive
Paper input capacity:	
Standard:	2 x 550-sheet paper trays 1 x 100-sheet bypass tray
Maximum:	4400 sheets
Paper output capacity:	
Maximum:	1625 sheets
Paper size:	B5 – A3 (Max 12" x 18" through the by-pass tray)
Paper weight:	
Paper trays:	60 – 256 gsm
Bypass tray:	60 – 300 gsm
Duplex tray:	60 – 169 gsm
Dimensions (W x D x H):	670 x 766 x 1020mm (Main frame with paper bank + ARDF)
Weight:	Less than 120 kg (Main frame with ARDF)
Power source:	220 – 240 V, 50/60 Hz
Power consumption:	
Operation:	Maximum 1.7 kW
Energy saver mode:	1.4 W

Printer

Print speed:	
MP C3001:	B/W / full colour: 30 prints per minute
MP C3501:	B/W / full colour: 35 prints per minute
Printer language:	
Standard:	PCL5c, PCL6 (XL)
Option:	Adobe® PostScript® 3™, IPDS
Resolution:	Maximum: 1200 x 1200 dpi
Interface:	
Standard:	Ethernet 10 base-T/100 base-TX, USB 2.0 print interface, 2 x USB Host I/F
Option:	Bi-directional IEEE 1284/ECP/Wireless LAN (IEEE 802.11a, b, g, WPA support), Bluetooth, Ethernet 1000 base-T, USB 2.0/SD Slot
Network protocol:	TCP/IP, IPX/SPX
Supported environments:	
	Windows® 2000/XP/Vista/7/Server 2003/Server 2008/Server 2008R2,

Novell®NetWare® 3.12/3.2/4.1/4.11/5.0/5.1/6/6.5,
Sun® Solaris 2.6/7/8/9/10,
HP-UX 10.x/11.x/11iv2/11iv3,
SCO OpenServer 5.0.6/5.0.7/6.0,
RedHat® Linux 6.x/7.x/8.x/9.x/Enterprise,
IBM® AIX v4.3/5L v5.1/v5.2/v5.3,
MacintoshOS X v10.2 or later (OS X native),
IBM®System i5™ HPT, SAP® R/3®,
NDPSGateway,
AS/400® using OS/400 Host PrintTransform,
Citrix

Scanner

Scan speed:	
B/W / Full colour:	Maximum 51 originals per minute (LEF, A4, 200 dpi)
Resolution:	Maximum 1,200 dpi (TWAIN scan only)
Original size:	A5 - A3
Output formats:	PDF/JPEG/TIFF/High compression PDF
Bundled drivers:	Network TWAIN
Scan to e-mail:	SMTP (SSL), POP3
Destination addresses:	Maximum 500 per job
Stored destination addresses:	Maximum 2,000
Address book:	Via LDAP or locally on Hard Disk Drive
Scan to folder:	SMB, FTP, NCP
Destination:	Maximum 50 folders per job

Software (Standard)

- SmartDeviceMonitor
- Web SmartDeviceMonitor
- Web Image Monitor
- App2Me

Fax Option

Circuit:	PSTN, PBX
Compatibility:	ITU-T (CCITT) G3, ITU-T (T.37) Internet fax, ITU-T (T.38) IP fax
Modem speed:	Maximum: 33.6 Kbps
Resolution:	
Standard/detail:	200 x 100/200 dpi
Maximum:	400 x 400 dpi (option)
Compression method:	MH, MR, MMR, JBIG
Scanning speed:	0.50 seconds (A4, SEF, standard/detail mode)
Memory capacity:	
Standard:	4 MB
Maximum:	28 MB
Memory backup:	Yes

Option

- 2 x 550-sheet paper bank
- 2000-sheet large capacity bank
- 1200-sheet side large capacity tray
- Internal shift tray

- One-bin tray
- Side tray
- Envelope feeder
- Bridge unit
- 500-sheet finisher
- 1000-sheet multi-tray finisher
- 1000-sheet booklet finisher
- 2/4 or 3 hole punch kits
- G3 fax unit
- 2nd or 3rd G3 fax unit
- Fax memory unit
- File Format Converter
- Camera Direct Print Card
- USB 2.0/SD Slot
- Professional software solutions

For availability of models, options and software, please consult your local Ricoh supplier



ISO 14001: Lic C10297
SAI Global



ISO 9001: Lic QEC3297
SAI Global



RICOH

